



**PERRLA**

**HOW TO ACTIVATE PERRLA**

Our Tutorial Video, Transcribed for you | PERRLA Support

Copyright © 2011, PERRLA LLC | All Rights Reserved | <http://www.PERRLA.com>

## How to activate PERRLA

Like nearly all modern software, PERRLA requires the user to activate before it will function.

This video shows how to fully activate your purchased PERRLA product.

After installation, the Launch PERRLA icon will be on your desktop. Just double-click this yellow PERRLA pencil to get started.



While PERRLA is loading, it runs diagnostics to make sure your PERRLA environment is properly configured. If PERRLA discovers a problem, it will provide you with additional information and instructions.



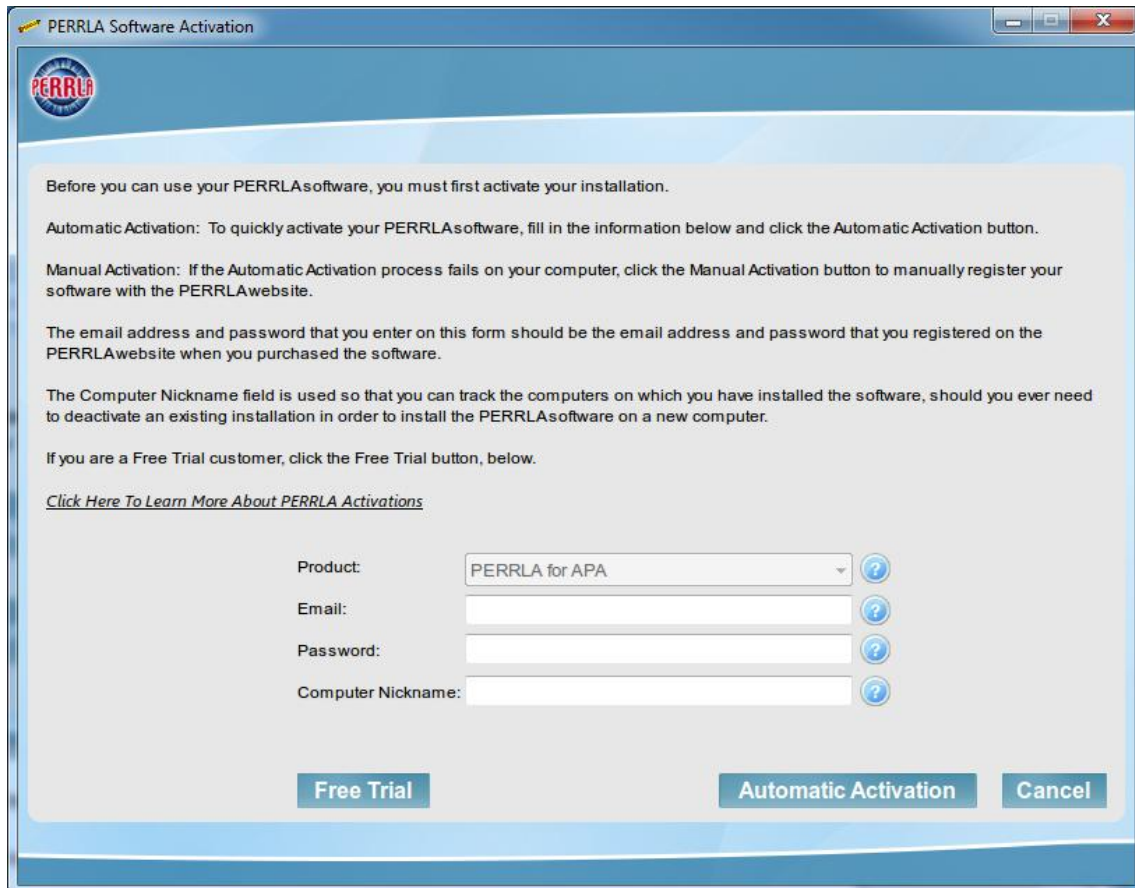
Since this is the first time we are running PERRLA, we are asked if we have already purchased, or if we want to start the free trial.



We are going to click the “I Have Already Purchased PERRLA” button

The Free Trial of PERRLA including Free Trial activation is covered in a separate video.

The PERRLA Software Activation screen will be displayed with detailed instructions shown at the top.



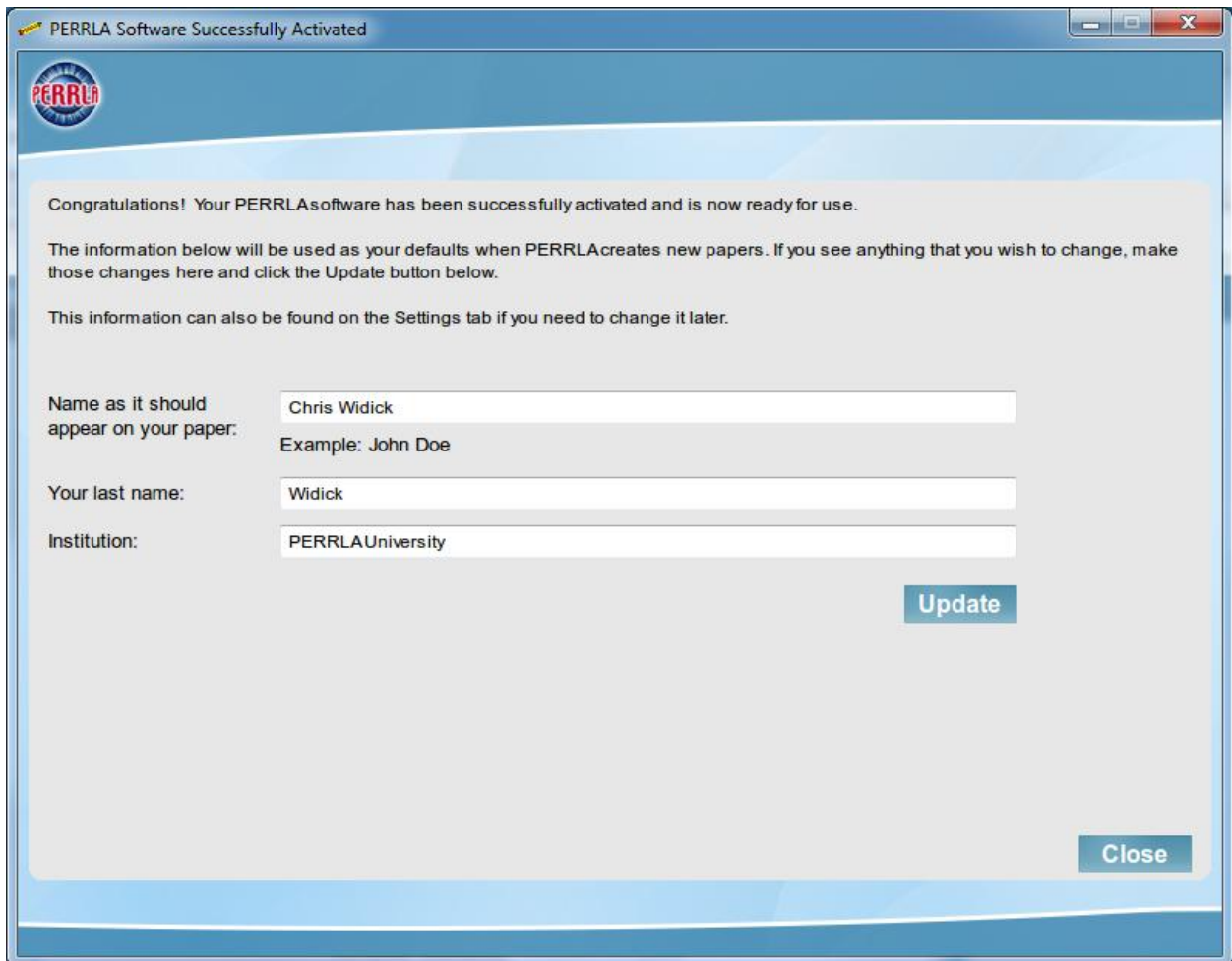
When you activate, PERRLA communicates with the PERRLA website to validate that you are registered customer. Your computer will need to be connected to the internet in order to use our Automatic Activation process, which only takes a moment. If the computer you are trying to activate is NOT connected to the internet, there is a Manual Activation process which can be completed in 5 to 10 minutes on an internet-connected computer.

To use the Automatic Activation process, enter the email address and password you provided when you purchased PERRLA. Enter the nickname you wish to use to identify this computer. If, in the future, you wish to deactivate this installation, having the computer nickname will make it easy to identify which installation to deactivate.

To complete the process, click the Automatic Activation button.

### Automatic Activation

Within a few seconds, the screen should be cleared and replaced with a Congratulations message.



The screenshot shows a dialog box titled "PERRLA Software Successfully Activated". The dialog box has a blue header with the PERRLA logo on the left. The main content area is light gray and contains the following text:

Congratulations! Your PERRLA software has been successfully activated and is now ready for use.

The information below will be used as your defaults when PERRLA creates new papers. If you see anything that you wish to change, make those changes here and click the Update button below.

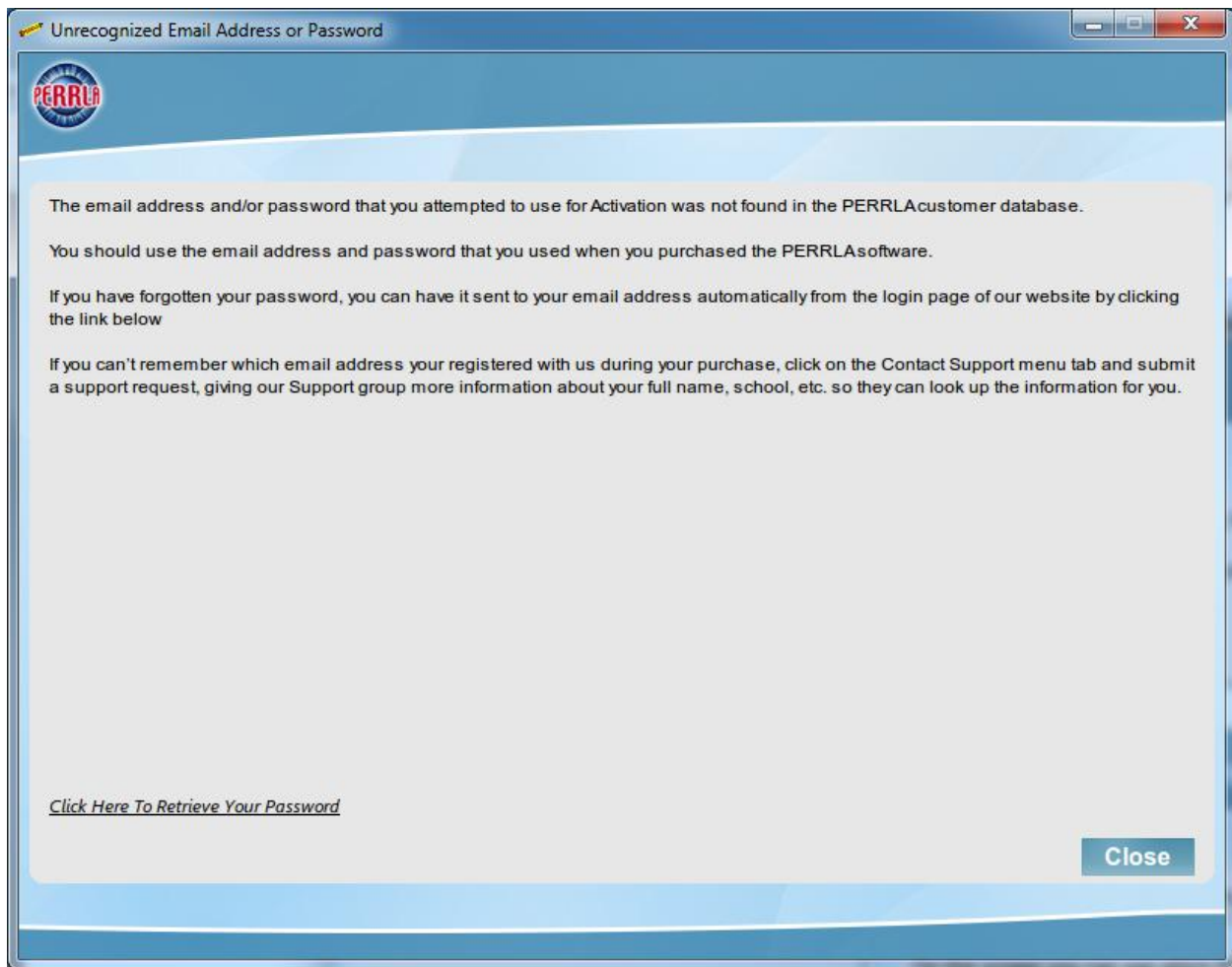
This information can also be found on the Settings tab if you need to change it later.

Below the text are three input fields:

- Name as it should appear on your paper:  Example: John Doe
- Your last name:
- Institution:

At the bottom right of the input fields is a blue "Update" button. At the bottom right of the dialog box is a blue "Close" button.

If Automatic Activation fails because you have entered an incorrect email address or password, you will be notified immediately.

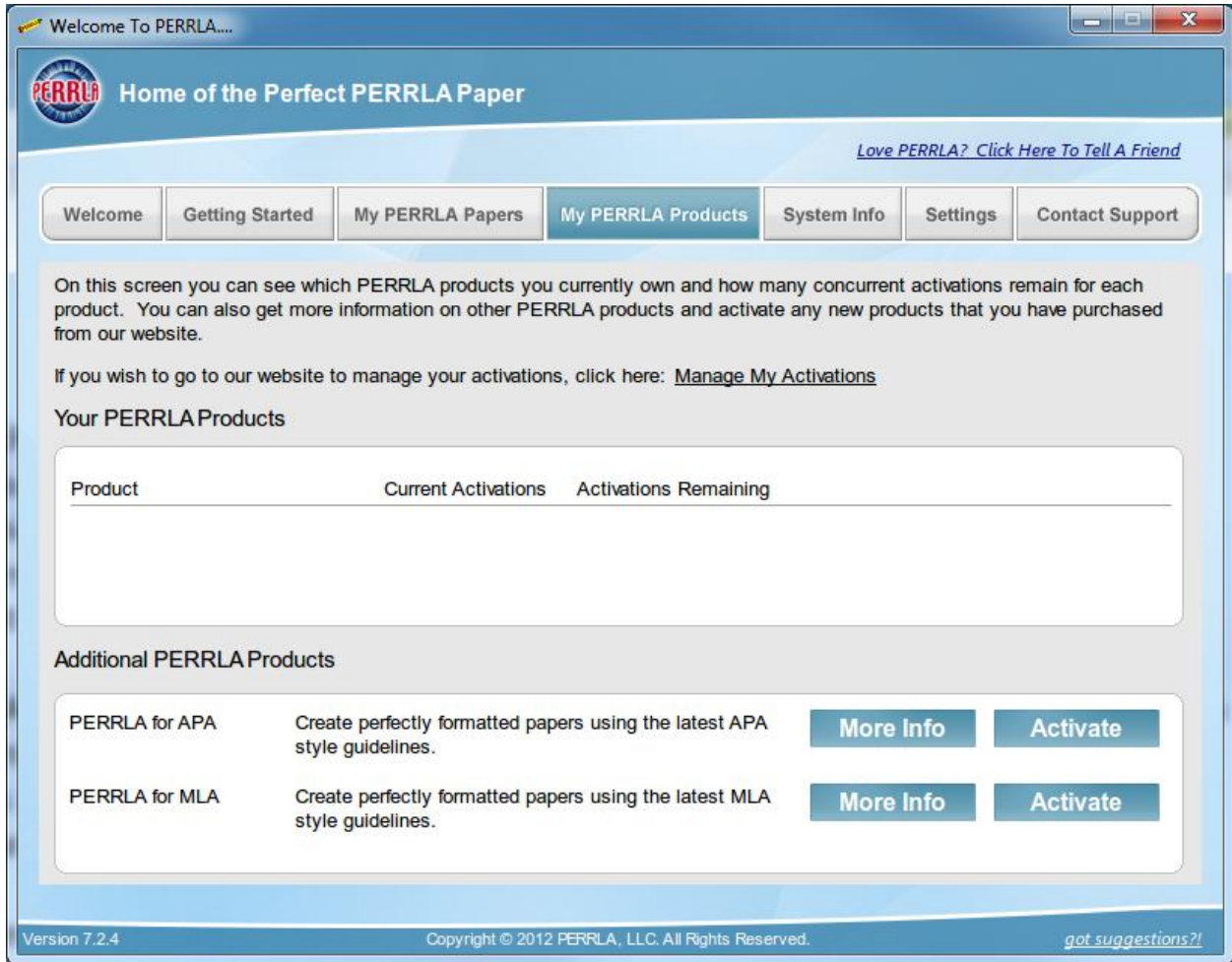


A link is provided on-screen that will take you to the login page of the PERRLA website. On that page, you can request that your password be emailed to you.

[Click Here To Retrieve Your Password](#)

If Automatic Activation fails for any other reason, click the Manual Activation button. Additional instructions for the Manual Activation process appear later in this video.

As we mentioned at the start of this video, we were showing the most common way to get to the Activation screen. The other way, is from the My PERRLA Products tab.



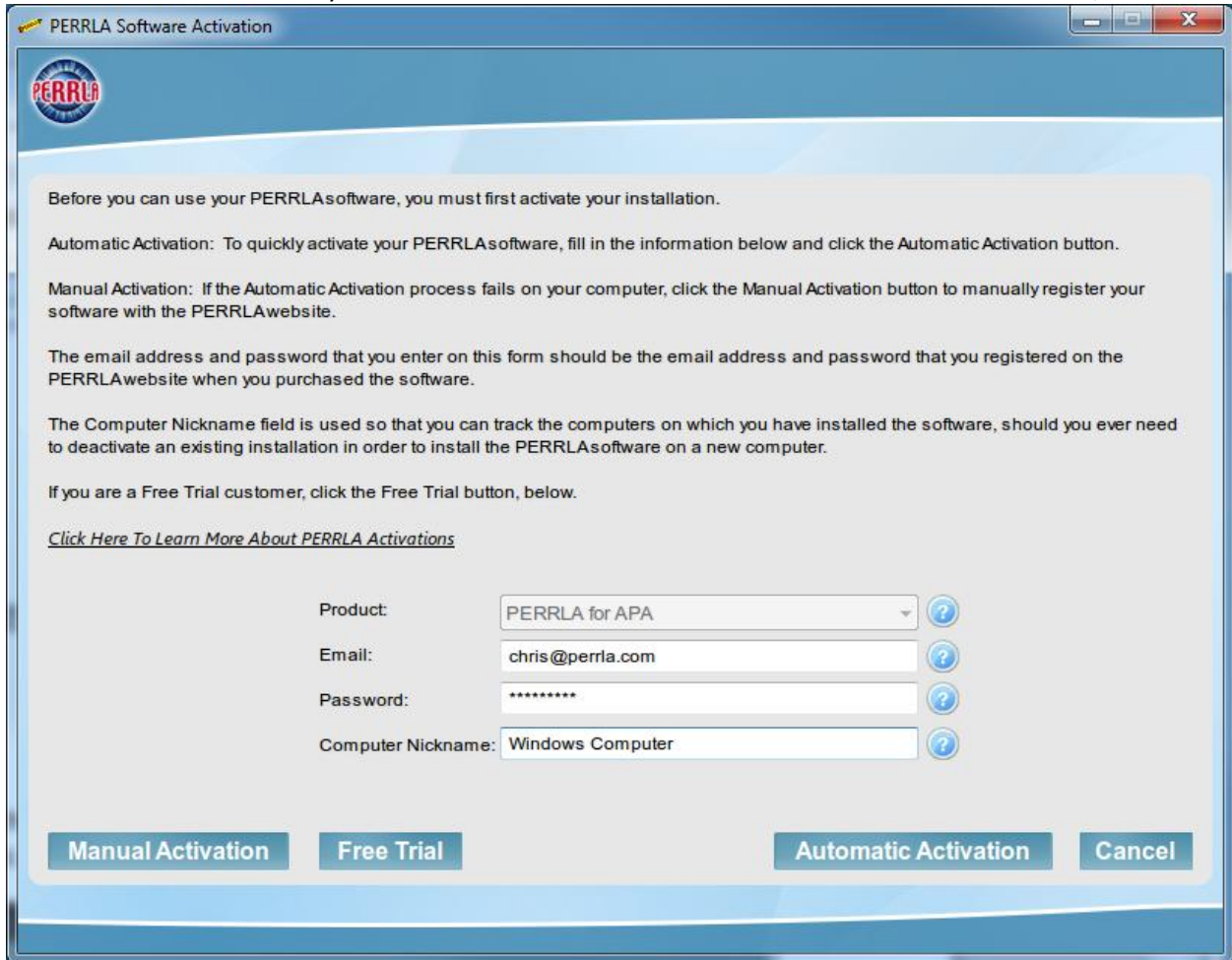
On the My PERRLA Products tab, there is a list of PERRLA products that you own. Clicking the Activate button next to the product you wish to activate will take you to the Activation screen that you saw.

The rest of this video demonstrates the Manual Activation process...

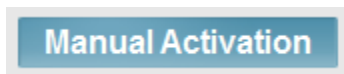
If you are unable to use Automatic Activation, you can still activate PERRLA. It will require that you use an internet-connected computer in order to access the PERRLA website.

In Manual Activation, your PERRLA software will generate a unique set of information that you will then enter into the PERRLA website. In return, the PERRLA website will provide unique information that you will enter into your PERRLA software to complete the activation process. This is the same thing that happens during Automatic Activation except that PERRLA the communication for you.

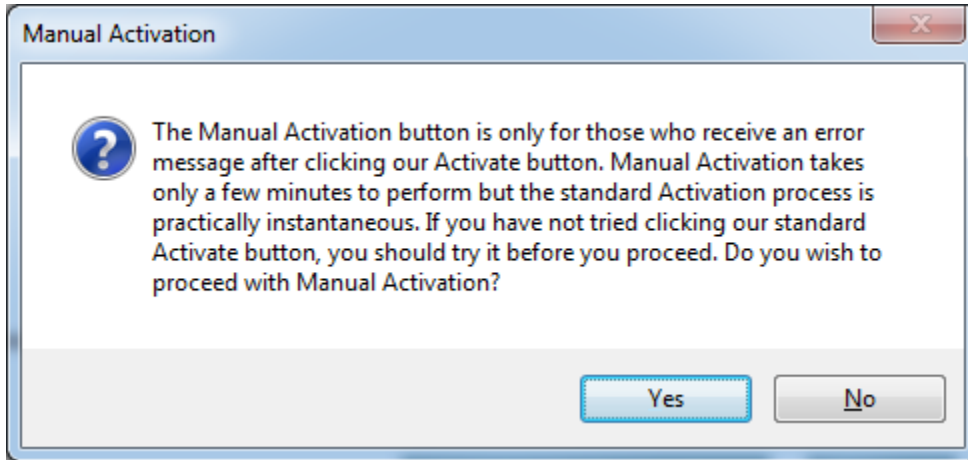
On the same screen where you have tried to click the Automatic Activation button and failed,



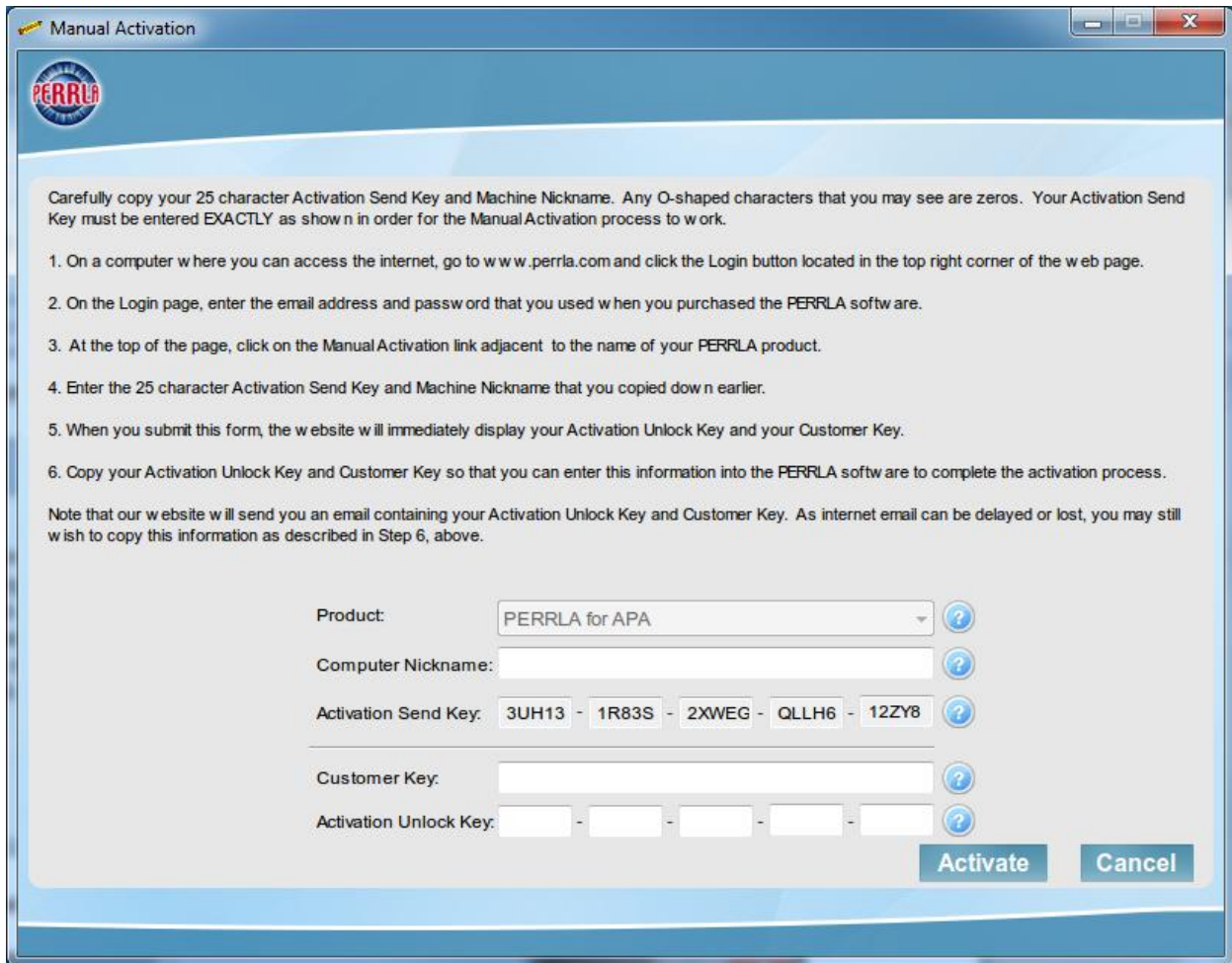
click the Manual Activation button instead.



When you do, PERRLA will ask you to confirm that you want to use Manual Activation.



Click Yes to continue and you will be shown the Manual Activation screen.



Carefully copy the 25 character Activation Send Key. Any oh shape characters that you may see are zeros. Your Activation Send Key must be entered exactly as shown in order for the manual activation process to work.

Step 1. On a computer where you can access the internet, go to <http://www.perrla.com/> and click the login link in the upper right corner.



Step 2. On the login page, enter the email address and password that you used when you purchased the perrla software.

**Login Here:**

Email Address

Password

Step 3. At the top of the page click on the Manual Activation link adjacent to your PERRLA product.



Step 4. Enter the 25 character Activation Send Key and Machine Nickname that you copied down earlier.

After submitting the Activation Send Key, you will be provided an Activation Unlock Key and a Customer Key to enter into your PERRLA software to complete the activation process. The Activation Unlock Key and Customer Key will be shown on the screen and will also be sent to you via email.

**Activation Send Key**

**Installation Computer (Nickname e.g., My Dell Laptop)**

For more information on Activating your PERRLA software, click [HERE](#).

Step 5. When you submit this form, the website will immediately display your Activation Unlock Key and your Customer Key.

### Your Activation Unlock Key

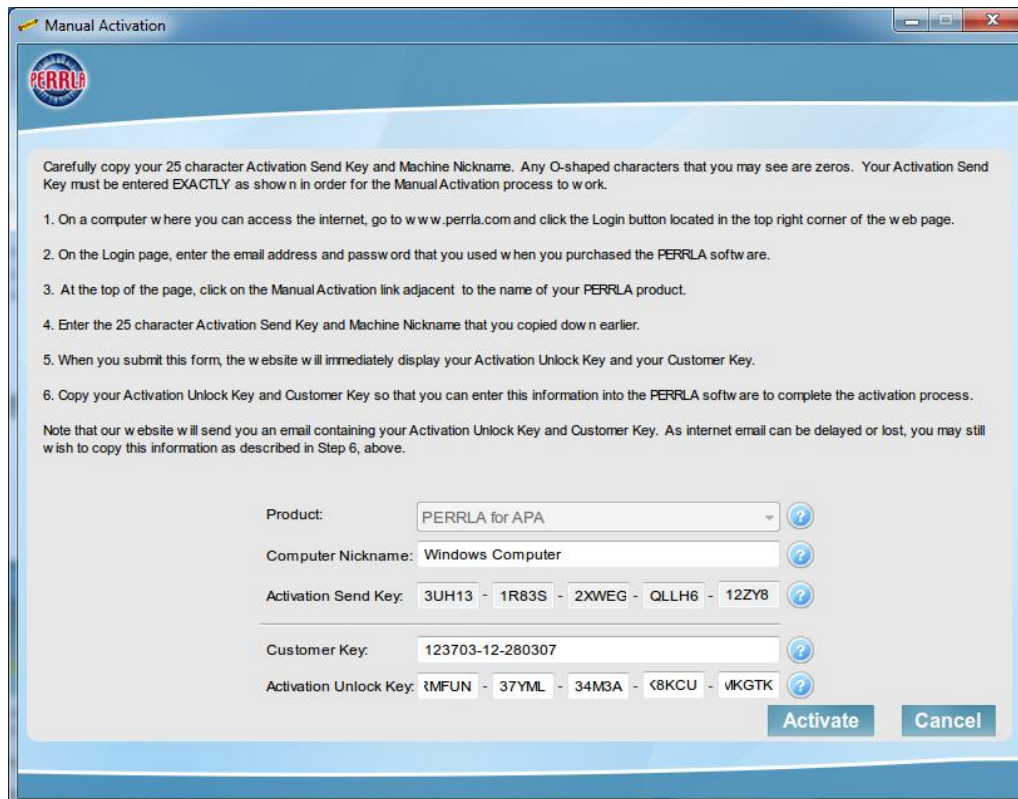
The 25 character key shown below is your Activation Unlock Key. You will need the Activation Unlock Key and the Customer Key in order to activate your PERRLA software. An email containing this key is being sent to your email address: [chris@perrla.com](mailto:chris@perrla.com)

The next time you run your PERRLA software, you will be asked if you've received an Activation Unlock Key. When you answer affirmatively, you will be given an opportunity to enter your Activation Unlock Key and Customer Key to complete the activation process. You must enter the Activation Unlock Key and the Customer Key exactly as they are shown here.

<b>Activation Unlock Key</b>				
DB3SA	5YL95	1R9PY	8U7X1	H984F
<b>Customer Key:</b>				
123703-1-280307				

For more information on Activating your PERRLA software, click [HERE](#).

Step 6. Copy your Activation Unlock Key and Customer Key so that you can enter this information into the PERRLA software to complete the Activation process.



For additional videos and documentation, go to  
<http://www.perrla.com>  
and click on the Help Center tab